

GENPRO 425e

4G INDUSTRIAL CELL MODEM (LTE CAT. 4)

This 4G modem transmits data series (RS232 / RS485) or contact status following IP Standard protocols or by SMS in a quick and simple way. Thanks to its comprehensive embedded software offering (EasePro, EaseIP, EaseNTRIP), it covers a large number of business applications.

2G

3G

4G



Low consumption

LowPower mode (EaseIP) : Imoy = 2mA
4G / attached mode : Imoy = 40 mA
4G / data transfer mode : Imoy = 215 mA



Robust

Aluminium case
IP 31



Monitoring

Managing Inputs/Output
SMS Alerts
Remote control of equipment



Compact

73 x 54.5 x 25.5 mm



Embedded Software

EasePro: Ref N1103A8-EPro
EaseIP: Ref N1103A8-S0519E
EaseNTRIP: Ref N1103A8-S0445E
SDK (dev. EGM)



Optimal flow

4G LTE CAT.4 network

4G

2 years warranty

CE RoHS 

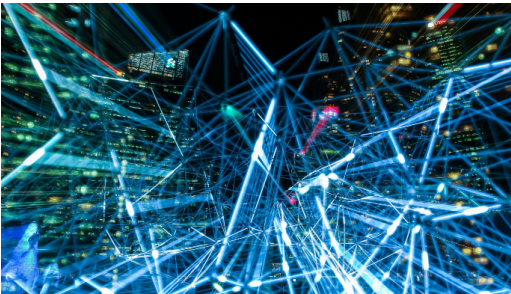
FEATURES

- Interconnection of equipments (EaseIP)
Billboards, charging stations, automatic access points, product dispensers, etc.
- Monitoring of weather station, energy meter, sensor, etc. (EaseIP)
- Measurement and threshold alert (EasePro)
- Transmission of SMS alert (EasePro)
- Remote control of equipment (EasePro)
- Maintenance alert (EasePro)
- 4G RTK Bridge (EaseNTRIP)

PACK DELIVERED CONTAINS

- 1 GenPro 425e modem with an embedded software
- 1 cord 4 wires (alim - 1 IN - 1 OUT) (Ease Pro)
- 1 cord 2 wires (2 IN) (Ease Pro)
- 2 mounting clips
- 1 operating instructions manual
- Options:
 - Antenna 4G (recommended ref. 636Z232160)
 - Serial cable (ref. 4404000806)
 - Power supply (ref. 0471210705)
 - Kit rail DIN (ref. K002)

USE CASE EXAMPLES



Permanent data communication



Remote metering



Radio guidance

GenPro 425e is an industrial cellular modem operating on 2G / 3G / 4G (LTE Cat 4) networks. It transmits data series (RS232 or RS485) or contact status following IP protocols (TCP / UDP / FTP) or by SMS in a quick and simple way. The compatible embedded software can cover a wide range of applications: permanent data communication, event alert, remote reading of meter, RTK data transmission for radio guidance, remote control, etc. Specifically designed to address the issues related to collection and transmission of all kinds of data this device is configurable locally and remotely.

TECHNICALS SPECIFICATIONS

Interfaces

Antenna	1 SMA-Female connector
Power supply	+7.2 to 32 VDC (micro-FIT 4 pts connector)
Serial port	1 RS 232 (Sub-D 15 pts female) 1RS 485 2 points connectors (EaseIP)
Digital input / output	1 analog input 0-10V (EasePro) 2 opto-coupled digital inputs 3.5 to 35VDC (EasePro) 1 logic output «open collector» 500mA 0-48VDC (EasePro)
SIM	Mini SIM 2FF format
LED	Cellular connectivity
Voice service	DTMF decoding (EasePro)

Spécifications techniques

Dimensions	73 x 54.5 x 25.5 mm
Net Weight	90 g
Material	Aluminium
Fixations	2 mounting clips Optional kit rail DIN (ref K002)
Operating T°	-20°C < T° < +60°C
Storage T°	-40°C < T° < +85°C
Non condensing humidity	HR < 70% @ +55°C
Atmospheric pressure	700 hPa à 1060 hPa (-400 m à 3000 m)
Power type	7.2-32 Vdc / 15W max.
Consumption @ 12VDC	LowPower mode (EaseIP) : Imoy = 2mA 4G / attached mode : Imoy = 40 mA 4G / data transfer mode : Imoy = 215 mA

Connectivity

2G	GSM/ GPRS/ EDGE 850/900/1800/1900 MHz
3G	UMTS (HSDPA cat 24, UMTS HSUPA cat 6) 850/900/1900/2100 MHz
4G	LTE (FDD cat 4) Bands 20 (800 MHz), 5 (850 MHz), 8 (900 MHz), 3 (1800 MHz), 1 (2100 MHz), 7 (2600 MHz)

Certifications

Reach, RoHS

CE

The non-contractual descriptions and illustrations in this document are given as an indication. ERCOGENER SAS reserves the right to make any changes.